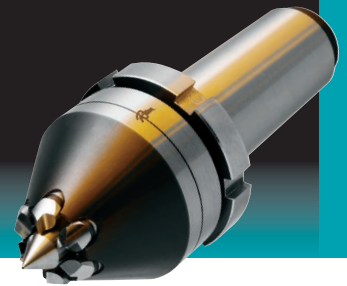




Mechanical Face Drivers

TYPE 50

Driving Diameter Range: 4.33" - 5.51"



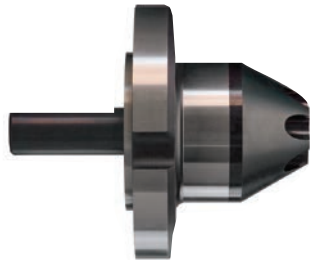
Selecting the Face Driver components:

- #1 Determine the Face Driver model with the type of mounting required for the machine.
- #2 If mounting directly to machine spindle, verify spindle size and select appropriate spindle adapter.
- #3 Choose the center point with the diameter range closest to the center hole diameter.
- #4 Determine machine spindle rotation and driving diameter to select the correct drive pins.
Rotation is determined by looking directly at the spindle face or chuck face.
(For detailed instructions on selecting a face driver, see page 42).

Mounting Styles Available for Type 50



Morse Taper*



Flange Mount*

#1 FACE DRIVER	
Order Code	Mounting Style
5006	#6 Morse Taper*
50FM	Flange Mount*

* All mechanical styles can be chucked.

#2 SPINDLE ADAPTER (For direct mount only)	
Order Code	Spindle Size
724761	A2-8
724762	A2-11

#3 CENTER POINT		#4 DRIVE PINS (6 pins required)				
Order Code	Center Hole Dia. Range	Order Code	Counterclockwise (Right)		Clockwise (Left)	
			Outer Driving Diameter	Inner Driving Diameter	Outer Driving Diameter	Inner Driving Diameter
C5101	0.120 - 1.380	P5001	4.33	3.94	-	-
C5102	1.339 - 1.575	P5002	-	-	4.33	3.94
C5103	1.535 - 1.772	P5003	4.92	3.94	-	-
C5104	1.732 - 1.969	P5004	-	-	4.92	3.94
C5105	1.929 - 2.165	P5005	5.51	4.73**	-	-
C5106	2.126 - 2.362	P5006	-	-	5.51	4.73**
C5107	2.323 - 2.559					
C5108	2.520 - 2.756					
C5109	2.717 - 2.953					

** Half chisled edges for better gripping

* All mechanical styles can be chucked.

TO ORDER: A complete unit consists of a face driver, center point and drive pins. For direct mounts, a spindle adapter must be added.

#1 Face Driver order code: _ _ _ _ _

#2 Spindle Adapter order code: _ _ _ _ _
(only required for direct mount)

#3 Center Point order code: _ _ _ _ _

#4 Drive Pins order code: _ _ _ _ _ (6 pins required)