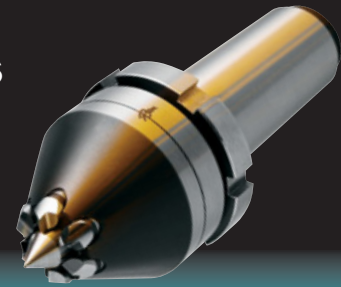




Mechanical Face Drivers

TYPE 41

Driving Diameter Range: 0.24" - 0.75"



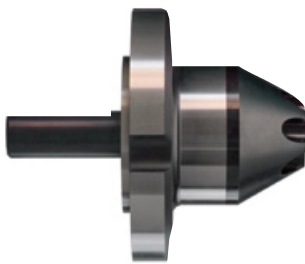
Selecting the Face Driver components:

- #1 Determine the Face Driver model with the type of mounting required for the machine.
- #2 If mounting directly to machine spindle, verify spindle size and select appropriate spindle adapter.
- #3 Choose the center point with the diameter range closest to the center hole diameter.
- #4 Determine machine spindle rotation and driving diameter to select the correct drive pins.
 - Rotation is determined by looking directly at the spindle face or chuck face.
 - (For detailed instructions on selecting a face driver, see page 42).

Mounting Styles Available for Type 41



Morse Taper*



Flange Mount*

* All mechanical styles can be chucked.

#1 FACE DRIVER	
Order Code	Mounting Style
4103	#3 Morse Taper*
4104	#4 Morse Taper*
4105	#5 Morse Taper*
41FM	Flange Mount*

* All mechanical styles can be chucked.

#2 SPINDLE ADAPTER (For direct mount only)	
Order Code	Spindle Size
708037	A2-5
708038	A2-6
708039	A2-8
708040	A2-11

#3 CENTER POINT		#4 DRIVE PINS (3 pins required)				
Order Code	Center Hole Dia. Range	Order Code	Counterclockwise (Right)		Clockwise (Left)	
			Outer Driving Diameter	Inner Driving Diameter	Outer Driving Diameter	Inner Driving Diameter
C4101	0 - 0.120	P4101	0.24	0.12	-	-
		P4102	-	-	0.24	0.12
		P4103	0.43	0.12	-	-
		P4104	-	-	0.43	0.12
		P4105	0.75	0.12	-	-
		P4106	-	-	0.75	0.12

TO ORDER: A complete unit consists of a face driver, center point and drive pins. For direct mounts, a spindle adapter must be added.

#1 Face Driver order code: _ _ _ _

#2 Spindle Adapter order code: _ _ _ _ _
(only required for direct mount)

#3 Center Point (included with Type 41)

#4 Drive Pins order code: _ _ _ _ _ (3 pins required)