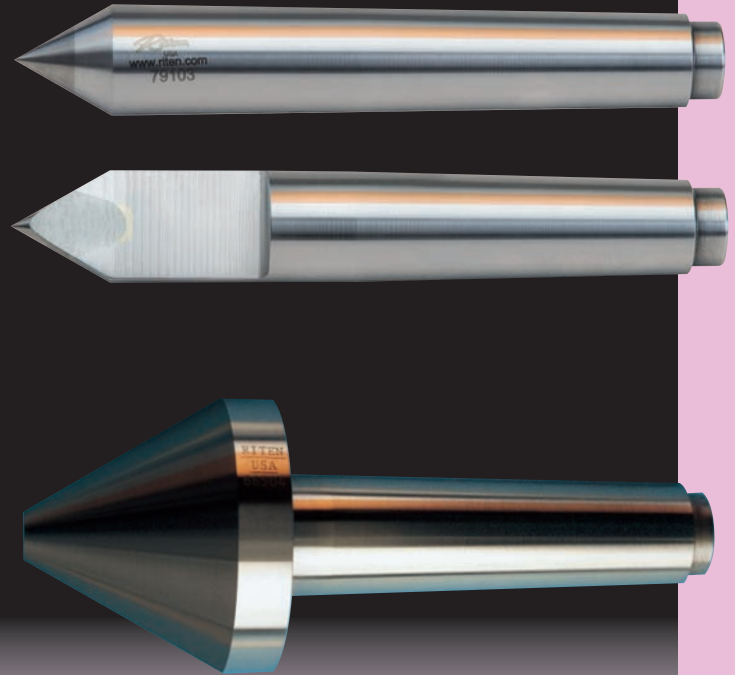




Fast-Trak Specials

Order a Fast-Trak Special when you need a special center and time is of the essence. Additional tapers are available from our semi-finished inventories. Call Riten at **800-338-0027** with your special requirements. If you would rather fax your requirements, see pages 31 and 32.

- Accuracy guaranteed to $\pm .00005$
- Popular sizes in stock for fast delivery
- Other tapers available
- Hardened knockout ends
- Riten full service and repair

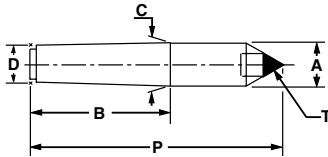


Special Carbide Full & Half Dead Centers

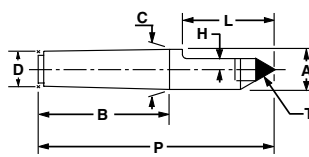
When ordering, specify 4-digit model # and add style #.

Example: Full center, 3 Morse Taper = 79053

STYLE 3 - FULL CENTER



STYLE 4 - HALF CENTER



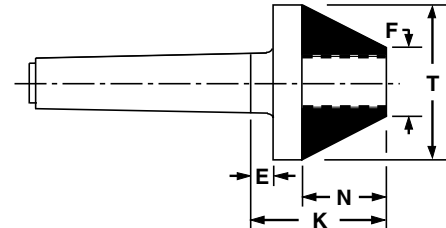
MORSE TAPER

Model	Taper	P	B	C/A	D	•T	H	L
7905	3MT	5 1/4	33/16	0.938	0.778	3/4	1/8	111/16
7906	3MT	6 1/4	33/16	0.938	0.778	3/4	1/8	25/8
7907	3MT	6 3/4	33/16	0.938	0.778	3/4	1/8	31/8
7908	4MT	6 3/4	41/16	1.231	1.020	3/4	1/8	21/4
7909	4MT	6 3/4	41/16	1.231	1.020	1	1/8	21/4
7910	4MT	7 3/4	41/16	1.231	1.020	3/4	1/8	23/4
7911	4MT	7 3/4	41/16	1.231	1.020	1	1/8	23/4
7912	4MT	8 1/4	41/16	1.231	1.020	3/4	1/8	31/4
7913	4MT	8 1/4	41/16	1.231	1.020	1	1/8	31/4
7914	5MT	8 1/2	53/16	1.748	1.475	1	1/8	23/4
7915	5MT	9 1/2	53/16	1.748	1.475	1	1/8	33/4
7916	5MT	10	53/16	1.748	1.475	1	1/8	41/4

JARNO TAPER

7926	10J	7 1/2	5	1.25	1.000	1	1/8	2
7927	10J	8 1/2	5	1.25	1.000	1	1/8	3
7928	10J	9 1/4	5	1.25	1.000	1	1/8	33/4
7929	14J	10 1/2	7	1.75	1.400	1	1/8	3
7930	14J	11 1/2	7	1.75	1.400	1	1/8	4
7931	14J	12	7	1.75	1.400	1	1/8	4 1/2

Special Carbide Bull Nose Dead Centers



MORSE TAPER

Model	MT	•T	F	N	E	K
66901	3	13/4	3/4	0.87	1/2	1.86
66902	3	2	3/4	1.08	1/2	2.08
66903	3	2 1/2	1	1.30	1/2	2.30
66904	3	2 3/4	1	1.52	1/2	2.51
66905	4	13/4	3/4	0.87	1/2	1.86
66906	4	2	3/4	1.08	1/2	2.08
66907	4	2 1/2	1	1.30	1/2	2.30
66908	4	2 3/4	1	1.52	1/2	2.51
66909	5	13/4	3/4	0.87	1/2	2.64
66910	5	2	3/4	1.08	1/2	2.08
66911	5	2 1/2	1	1.30	1/2	2.30
66912	5	2 3/4	1	1.52	1/2	2.51

• Carbide diameter