



# Standard Length and Long Series Dead Centers

- Accuracy guaranteed to  $\pm .00005$
- Through-hardened to 61-63 Rc for extra regrinds
- Carbide tipped dead centers are hardened only on the knockout ends.
- Riten full service and repair
- Applying a Moly EP632 grease on the point will reduce friction and wear.



Std. Length Style 1, Steel

Std. Length Style 2, Steel

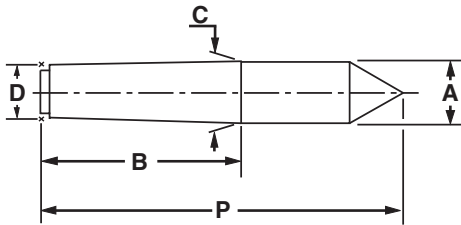
Std. Length Style 3, Carbide

Std. Length Style 4, Carbide

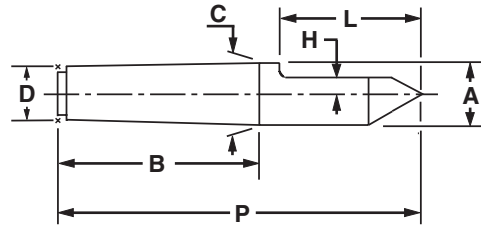


Long Series. Carbide Tipped Points available. See Fast-Trak Specials, page 20.

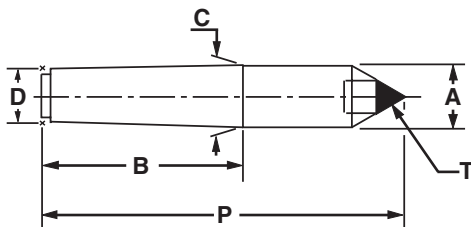
### STEEL FULL CENTER - STYLE 1



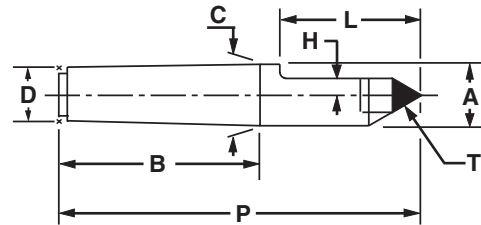
### STEEL HALF CENTER - STYLE 2



### CARBIDE TIPPED FULL CENTER - STYLE 3



### CARBIDE TIPPED HALF CENTER - STYLE 4



When ordering, specify 4-digit model # from page 18 and add style #.

Examples:

4 Morse Taper, Steel Full Center, = 71041 

12 Jarno Taper, Carbide Tipped Half Center = 72124 

# Standard Length Dead Centers

MORSE TAPER								
Model	Taper	P	B	C/A	D	•T	H	L
7101	1	35/16	21/8	.475	.369	1/4	1/8	1
7102	2	43/16	29/16	.700	.572	3/8	3/16	13/8
7103	3	51/4	33/16	.938	.778	1/2	1/4	111/16
7104	4	63/4	41/16	1.231	1.020	1/2	1/4	21/4
7105	5	81/2	53/16	1.748	1.475	5/8	3/8	23/4
7106	6	111/2	71/4	2.494	2.116	7/8	1/2	31/2
7107	7	15	10	3.270	2.750	1	3/4	4

JARNO TAPER								
Model	Taper	P	B	C/A	D	•T	H	L
7204	6	41/2	3	.750	.600	3/8	3/16	11/8
7205	6	51/2	3	.750	.600	3/8	3/16	23/16
7206	6	6	3	.750	.600	3/8	3/16	21/2
7207	7	51/4	31/2	.875	.700	3/8	3/16	13/16
7208	8	6	4	1.000	.800	1/2	1/4	15/8
7209	9	63/4	41/2	1.125	.900	1/2	1/4	17/8
7210	10	71/2	5	1.250	1.000	1/2	1/4	2
7211	11	81/4	51/2	1.375	1.100	1/2	1/4	2
7212	12	9	6	1.500	1.200	5/8	5/16	21/4
7213	13	93/4	61/2	1.625	1.300	5/8	5/16	21/2
7214	14	101/2	7	1.750	1.400	5/8	5/16	3
7215	15	111/4	71/2	1.875	1.500	5/8	5/16	3
7216	16	12	8	2.000	1.600	3/4	3/8	3
7218	18	131/2	9	2.250	1.800	7/8	7/16	31/2
7220	20	15	10	2.500	2.000	1	1/2	4
7236	36	27	18	4.500	3.600	21/2	7/8	7

BROWN & SHARPE TAPER								
Model	Taper	P	B	C/A	D	•T	H	L
7405	5	31/8	2	.533	.450	1/4	1/8	15/16
7406	6	35/8	23/8	.599	.500	1/4	1/8	15/16
7407	7	43/8	27/8	.720	.600	3/8	3/16	11/8
7408	8	57/16	39/16	.898	.750	1/2	1/4	13/8
7409	9	61/2	41/4	1.078	.901	1/2	1/4	2
7410	10	77/8	5	1.260	1.045	1/2	1/4	21/4
7400	★10	89/16	511/16	1.289	1.045	1/2	1/4	21/4
7411	11	95/16	515/16	1.498	1.250	5/8	5/16	21/2
7401	★11	101/8	63/4	1.531	1.250	5/8	5/16	21/2
7412	12	111/8	71/8	1.797	1.500	5/8	3/8	31/4
7413	13	113/4	73/4	2.073	1.750	7/8	7/16	31/2
7415	15	131/2	83/4	2.615	2.250	1	1/2	4
7417	17	141/2	93/4	3.156	2.750	11/2	3/4	4
7418	18	15	101/4	3.427	3.000	11/2	3/4	41/2

• Carbide diameter ★ CINN. Grinder

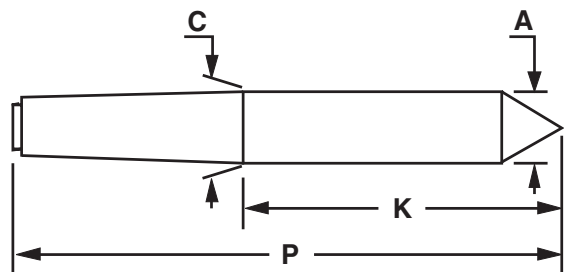
# Long Series Dead Centers

MORSE TAPER				
Model	Taper	P	K	C/A
64502	2	53/16	25/8	.700
64602	2	63/4	43/16	.700
64503	3	61/4	31/16	.938
64603	3	63/4	39/16	.938
64504	4	73/4	311/16	1.231
64604	4	81/4	43/16	1.231
64505	5	91/2	45/16	1.748
64605	5	10	413/16	1.748
64506	6	121/2	51/4	2.494
64606	6	13	53/4	2.494

JARNO TAPER				
Model	Taper	P	K	C/A
64510	10	81/2	31/2	1.250
64610	10	91/4	41/4	1.250
64514	14	111/2	41/2	1.750
64614	14	12	5	1.750

BROWN & SHARPE				
Model	Taper	P	K	C/A
64407	7	51/4	23/8	.720
64412	12	121/4	51/8	1.797

METRIC TAPER					
Model	Metric Size	Rate of Taper	P	K	C/A
70080	80	1:20	121/2	43/4	3.150
70100	100	1:20	141/2	53/8	3.937
70081	80	1:10	123/8	43/4	3.150
70101	100	1:10	141/2	43/8	3.937



Drawing shows Long Series and Metric Taper dimensions only.