

RITEN TYPE 60



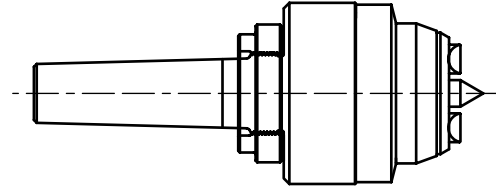
Design: Hydraulic
Driving Diameter Range: 0.28 - 0.55 Inch

FACE DRIVERS

A - MOUNTING

ORDER CODE	MOUNTING STYLE	MAX. PART WEIGHT	UPC NUMBER
03	#3 Morse Taper	84 lbs.	662503-00259
04	#4 Morse Taper	84 lbs.	662503-00260
05	#5 Morse Taper	84 lbs.	662503-00261
CM	Chuck Mount	84 lbs.	662503-00262
FM	Flange Mount	84 lbs.	662503-00263

MORSE TAPER SHANK

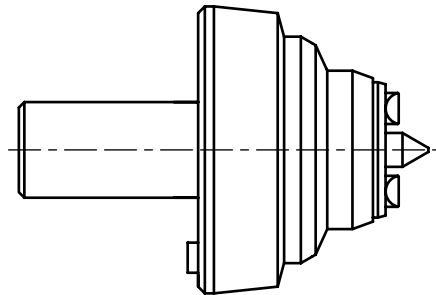


B - DRIVE PINS - 4 Pins Required

Minimum Stock Size Should Be .030 Larger Than Driving Diameter
Maximum Stock Size Should Be No More Than 2X Driving Diameter

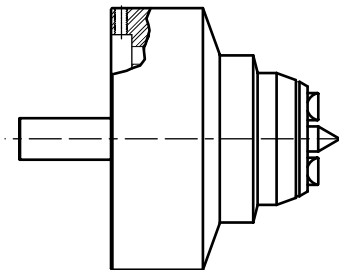
ORDER CODE	DRIVING DIA.		PIN STYLE	UPC NUMBER
	Right	Left		
P6001	0.28	0.55	OFFSET	662503-00007
P6002	0.55	0.28	OFFSET	662503-00008
P6003	0.36	0.55	HALF OFFSET	662503-00005
P6004	0.55	0.36	HALF OFFSET	662503-00009
P6005	0.44	0.44	CENTRAL	662503-00006
P6006	0.55	0.55	FULL WIDTH	662503-00004

CHUCK MOUNT



Look directly at the chuck or spindle to determine rotation:
CLOCKWISE - USE LEFT-HAND PINS
COUNTERCLOCKWISE - USE RIGHT-HAND PINS.

FLANGE MOUNT - SPINDLE ADAPTER REQUIRED



C - CENTER POINTS

ORDER CODE	CENTER HOLE DIAMETER RANGE	UPC NUMBER
C6001	0.118 - 0.197	662503-00032
C6002	0.197 - 0.354	662503-00033
C6003	0.354 - 0.433	662503-00034

SPINDLE ADAPTERS TYPE 60

ORDER CODE	SPINDLE SIZE	UPC NUMBER
705046	A2-5"	662503-00264
705047	A2-6"	662503-00265
705048	A2-8"	662503-00266
705049	A2-11"	662503-00267

TO ORDER

To determine the order number of the product you want, enter the Order Code found in blue columns A, B & C in the corresponding slots to the right. Consult the separate price list for each unit's price and add for total.

ORDER CODE FORMULA

TYPE 60	A - MOUNT CODE -- --	B - PINS CODE -- -- -- --	C - CENTER POINT CODE -- -- -- --
-------------------	-------------------------	------------------------------	--------------------------------------

PRICING FORMULA

A - MOUNT PRICE	+	B - PINS PRICE	+	C - POINT PRICE	=	TOTAL LIST PRICE
-----------------	---	----------------	---	-----------------	---	------------------

(Unit price times 4)

For further assistance please call 1-800-338-0027, or complete the Information Request Sheet located on page 30 and fax to 1-800-338-0717