

RITEN TYPE 61



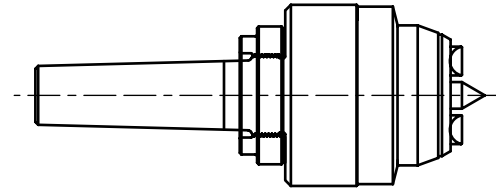
Design: Hydraulic
Driving Diameter Range: 0.60 – 0.98 Inch

FACE DRIVERS

A – MOUNTING

ORDER CODE	MOUNTING STYLE	MAX. PART WEIGHT	UPC NUMBER
03	#3 Morse Taper	84 lbs.	662503-00268
04	#4 Morse Taper	84 lbs.	662503-00269
05	#5 Morse Taper	84 lbs.	662503-00270
CM	Chuck Mount	84 lbs.	662503-00271
FM	Flange Mount	84 lbs.	662503-00272

MORSE TAPER SHANK

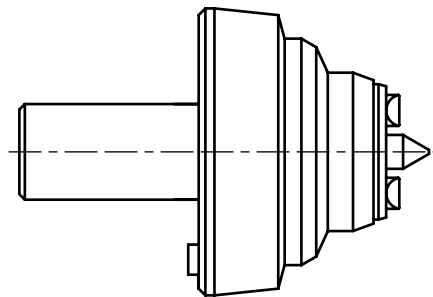


B – DRIVE PINS - 4 Pins Required

Minimum Stock Size Should Be .030 Larger Than Driving Diameter
Maximum Stock Size Should Be No More Than 2X Driving Diameter

ORDER CODE	DRIVING DIA.		PIN STYLE	UPC NUMBER
	Right	Left		
P6101	0.60	0.98	OFFSET	662503-00020
P6102	0.98	0.60	OFFSET	662503-00021
P6103	0.73	0.98	HALF OFFSET	662503-00022
P6104	0.98	0.73	HALF OFFSET	662503-00023
P6105	0.83	0.83	CENTRAL	662503-00024
P6106	0.98	0.98	FULL WIDTH	662503-00025

CHUCK MOUNT

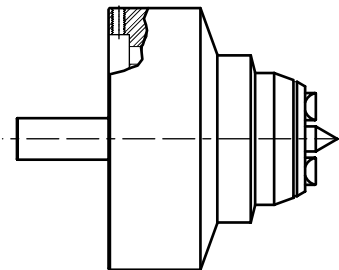


Look directly at the chuck or spindle to determine rotation:
CLOCKWISE – USE LEFT-HAND PINS
COUNTERCLOCKWISE – USE RIGHT-HAND PINS.

C – CENTER POINTS

ORDER CODE	CENTER HOLE DIAMETER RANGE	UPC NUMBER
C6101	0.118 - 0.197	662503-00035
C6102	0.197 - 0.275	662503-00036
C6103	0.275 - 0.354	662503-00037
C6104	0.354 - 0.433	662503-00038
C6105	0.433 - 0.511	662503-00039

FLANGE MOUNT – SPINDLE ADAPTER REQUIRED



SPINDLE ADAPTERS TYPE 61

ORDER CODE	SPINDLE SIZE	UPC NUMBER
705046	A2-5"	662503-00264
705047	A2-6"	662503-00265
705048	A2-8"	662503-00266
705049	A2-11"	662503-00267

TO ORDER

To determine the order number of the product you want, enter the Order Code found in blue columns A, B & C in the corresponding slots to the right. Consult the separate price list for each unit's price and add for total.

ORDER CODE FORMULA

TYPE 61	A - MOUNT CODE _ _ _	–	B - PINS CODE _ _ _ _ _	C - CENTER POINT CODE _ _ _ _ _
-------------------	-------------------------	---	----------------------------	------------------------------------

PRICING FORMULA

A - MOUNT PRICE	+	B - PINS PRICE	+	C - POINT PRICE	=	TOTAL LIST PRICE
(Unit price times 4)						

For further assistance please call 1-800-338-0027, or complete the Information Request Sheet located on page 30 and fax to 1-800-338-0717