

# RITEN TYPE 63



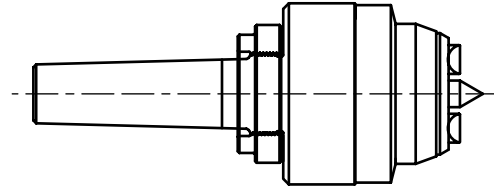
Design: Hydraulic  
Driving Diameter Range: 1.42 - 2.38 Inch

## FACE DRIVERS

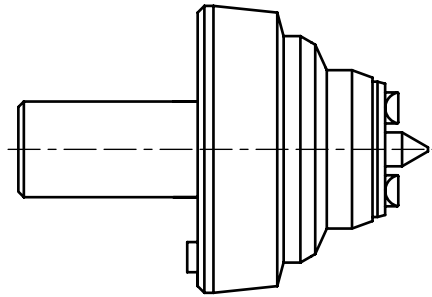
### A - MOUNTING

ORDER CODE	MOUNTING STYLE	MAX. PART WEIGHT	UPC NUMBER
05	#5 Morse Taper	160 lbs.	662503-00283
06	#6 Morse Taper	160 lbs.	662503-00284
C1	Chuck Mount	160 lbs.	662503-00285
C2	Chuck H.D.	220 lbs.	662503-00286
C3	Chuck H.D.	560 lbs.	662503-00287
C4	Chuck H.D.	1000 lbs.	662503-00288
F1	Flange Mount	160 lbs.	662503-00289
F2	Flange H.D.	220 lbs.	662503-00290
F3	Flange H.D.	560 lbs.	662503-00291
F4	Flange H.D.	1000 lbs.	662503-00292

### MORSE TAPER SHANK



### CHUCK MOUNT



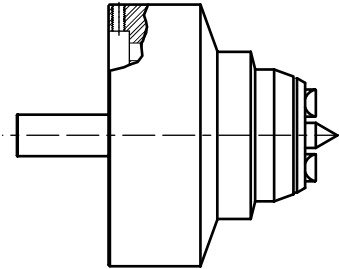
### B - DRIVE PINS - 5 Pins Required

Minimum Stock Size Should Be .030 Larger Than Driving Diameter  
Maximum Stock Size Should Be No More Than 2X Driving Diameter

ORDER CODE	DRIVING DIA.		PIN STYLE	UPC NUMBER
	Right	Left		
P6401	1.42	2.38	OFFSET	662503-00014
P6402	2.38	1.42	OFFSET	662503-00015
P6403	1.73	2.38	HALF OFFSET	662503-00016
P6404	2.38	1.73	HALF OFFSET	662503-00017
P6405	2.00	2.00	CENTRAL	662503-00018
P6406	2.38	2.38	FULL WIDTH	662503-00019

Look directly at the chuck or spindle to determine rotation:  
CLOCKWISE - USE LEFT-HAND PINS  
COUNTERCLOCKWISE - USE RIGHT-HAND PINS.

### FLANGE MOUNT - SPINDLE ADAPTER REQUIRED



### C - CENTER POINTS

ORDER CODE	CENTER HOLE DIAMETER RANGE	UPC NUMBER
C6301	0.393 - 0.511	662503-00003
C6302	0.511 - 0.629	662503-00049
C6303	0.629 - 0.748	662503-00050
C6304	0.748 - 0.866	662503-00051
C6305	0.866 - 0.984	662503-00052
C6306	0.984 - 1.102	662503-00053
C6307	1.102 - 1.220	662503-00054
C6308	1.220 - 1.338	662503-00055
C6309	1.338 - 1.456	662503-00056
C6310	1.456 - 1.574	662503-00057

### SPINDLE ADAPTERS TYPE 63

ORDER CODE	SPINDLE SIZE	UPC NUMBER
705050	A2-6"	662503-00293
705051	A2-8"	662503-00294
705052	A2-11"	662503-00295

### TO ORDER

To determine the order number of the product you want, enter the Order Code found in blue columns A, B & C in the corresponding slots to the right. Consult the separate price list for each unit's price and add for total.

### ORDER CODE FORMULA

TYPE <b>63</b>	A - MOUNT CODE _ _ _	-	B - PINS CODE _ _ _ _ _	C - CENTER POINT CODE _ _ _ _ _
-------------------	-------------------------	---	----------------------------	------------------------------------

### PRICING FORMULA

A - MOUNT PRICE	+	B - PINS PRICE	+	C - POINT PRICE	=	TOTAL LIST PRICE
-----------------	---	----------------	---	-----------------	---	------------------

(Unit price times 5)

For further assistance please call 1-800-338-0027, or complete the Information Request Sheet located on page 30 and fax to 1-800-338-0717