

# RITEN TYPE 64



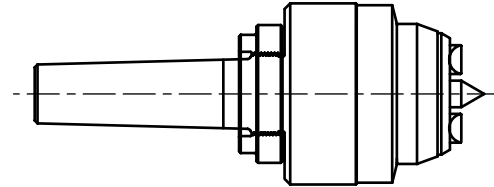
Design: Hydraulic  
Driving Diameter Range: 1.93 - 2.91 Inch

## FACE DRIVERS

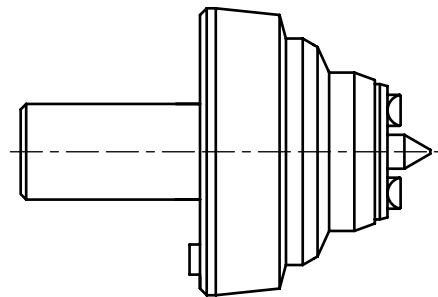
### A - MOUNTING

ORDER CODE	MOUNTING STYLE	MAX. PART WEIGHT	UPC NUMBER
05	#5 Morse Taper	160 lbs.	662503-00296
06	#6 Morse Taper	160 lbs.	662503-00297
C1	Chuck Mount	160 lbs.	662503-00298
C2	Chuck H.D.	220 lbs.	662503-00299
C3	Chuck H.D.	560 lbs.	662503-00300
C4	Chuck H.D.	1000 lbs.	662503-00301
F1	Flange Mount	160 lbs.	662503-00302
F2	Flange H.D.	220 lbs.	662503-00303
F3	Flange H.D.	560 lbs.	662503-00304
F4	Flange H.D.	1000 lbs.	662503-00305

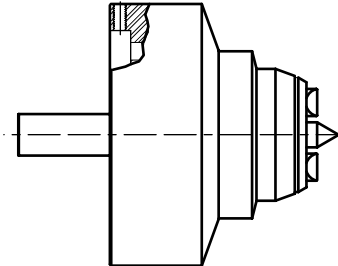
### MORSE TAPER SHANK



### CHUCK MOUNT



### FLANGE MOUNT - SPINDLE ADAPTER REQUIRED



### B - DRIVE PINS - 6 Pins Required

Minimum Stock Size Should Be .030 Larger Than Driving Diameter  
Maximum Stock Size Should Be No More Than 2X Driving Diameter

ORDER CODE	DRIVING DIA.		PIN STYLE	UPC NUMBER
	Right	Left		
P6401	1.93	2.91	OFFSET	662503-00014
P6402	2.91	1.93	OFFSET	662503-00015
P6403	2.24	2.91	HALF OFFSET	662503-00016
P6404	2.91	2.24	HALF OFFSET	662503-00017
P6405	2.51	2.51	CENTRAL	662503-00018
P6406	2.91	2.91	FULL WIDTH	662503-00019

Look directly at the chuck or spindle to determine rotation:  
CLOCKWISE - USE LEFT-HAND PINS  
COUNTERCLOCKWISE - USE RIGHT-HAND PINS.

### C - CENTER POINTS

ORDER CODE	CENTER HOLE DIAMETER RANGE	UPC NUMBER
C5501	0.393 - 0.590	662503-00058
C5502	0.590 - 0.787	662503-00059
C5503	0.787 - 0.984	662503-00060
C5504	0.984 - 1.181	662503-00061
C5505	1.181 - 1.378	662503-00062
C6401	1.378 - 1.575	662503-00063
C6402	1.575 - 1.772	662503-00064
C6403	1.772 - 1.969	662503-00065
C6404	1.969 - 2.166	662503-00066
C6405	2.166 - 2.363	662503-00067

### SPINDLE ADAPTERS TYPE 64

ORDER CODE	SPINDLE SIZE	UPC NUMBER
705050	A2-6"	662503-00293
705051	A2-8"	662503-00294
705052	A2-11"	662503-00295

### TO ORDER

To determine the order number of the product you want, enter the Order Code found in blue columns A, B & C in the corresponding slots to the right. Consult the separate price list for each unit's price and add for total.

### ORDER CODE FORMULA

TYPE <b>64</b>	A - MOUNT CODE _ _ _	-	B - PINS CODE _ _ _ _ _	C - CENTER POINT CODE _ _ _ _ _
-------------------	-------------------------	---	----------------------------	------------------------------------

### PRICING FORMULA

A - MOUNT PRICE	+	B - PINS PRICE (Unit price times 6)	+	C - POINT PRICE	=	TOTAL LIST PRICE
-----------------	---	--	---	-----------------	---	------------------

For further assistance please call 1-800-338-0027, or complete the Information Request Sheet located on page 30 and fax to 1-800-338-0717