

RITEN TYPE 68



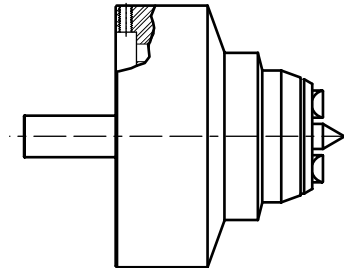
Design: Hydraulic
Driving Diameter Range: 4.66 – 5.74 Inch

FACE DRIVERS

A – MOUNTING

| ORDER CODE | MOUNTING STYLE | MAX. PART WEIGHT | UPC NUMBER |
|------------|----------------|------------------|--------------|
| F1 | Flange Mount | 600 lbs. | 662503-00316 |
| F2 | Flange H.D. | 900 lbs. | 662503-00317 |
| F3 | Flange H.D. | 1420 lbs. | 662503-00318 |
| F4 | Flange H.D. | 1920 lbs. | 662503-00319 |
| F5 | Flange H.D. | 2500 lbs. | 662503-00320 |
| F6 | Flange H.D. | 3000 lbs. | 662503-00321 |

FLANGE MOUNT – SPINDLE ADAPTER REQUIRED



B – DRIVE PINS - 10 Pins Required

Minimum Stock Size Should Be .030 Larger Than Driving Diameter
Maximum Stock Size Should Be No More Than 2X Driving Diameter

| ORDER CODE | DRIVING DIA. | | PIN STYLE | UPC NUMBER |
|------------|--------------|------|-------------|--------------|
| | Right | Left | | |
| P6801 | 4.66 | 5.74 | OFFSET | 662503-00026 |
| P6802 | 5.74 | 4.66 | OFFSET | 662503-00027 |
| P6803 | 4.96 | 5.74 | HALF OFFSET | 662503-00028 |
| P6804 | 5.74 | 4.96 | HALF OFFSET | 662503-00029 |
| P6805 | 5.27 | 5.27 | CENTRAL | 662503-00030 |
| P6806 | 5.74 | 5.74 | FULL WIDTH | 662503-00031 |

SPINDLE ADAPTERS TYPE 68

| ORDER CODE | SPINDLE SIZE | UPC NUMBER |
|------------|--------------|--------------|
| 705057 | A2-6" | 662503-00322 |
| 705058 | A2-8" | 662503-00323 |
| 705059 | A2-11" | 662503-00324 |
| 705060 | A2-15" | 662503-00325 |

Look directly at the chuck or spindle to determine rotation:
CLOCKWISE – USE LEFT-HAND PINS
COUNTERCLOCKWISE – USE RIGHT-HAND PINS.

C – CENTER POINTS

| ORDER CODE | CENTER HOLE DIAMETER RANGE | UPC NUMBER |
|------------|----------------------------|--------------|
| C6801 | 0.629 - 0.984 | 662503-00078 |
| C6802 | 0.984 - 1.338 | 662503-00079 |
| C6803 | 1.338 - 1.692 | 662503-00080 |
| C6804 | 1.692 - 2.047 | 662503-00081 |
| C6805 | 2.047 - 2.401 | 662503-00082 |
| C6806 | 2.401 - 2.755 | 662503-00083 |
| C6807 | 2.755 - 3.110 | 662503-00084 |
| C6808 | 3.110 - 3.464 | 662503-00085 |
| C6809 | 3.464 - 3.818 | 662503-00086 |
| C6810 | 3.818 - 4.173 | 662503-00087 |

TO ORDER

To determine the order number of the product you want, enter the Order Code found in blue columns A, B & C in the corresponding slots to the right. Consult the separate price list for each unit's price and add for total.

ORDER CODE FORMULA

| | | | | |
|-------------------|-------------------------|---|----------------------------|------------------------------------|
| TYPE 68 | A - MOUNT CODE _ _ _ | – | B - PINS CODE _ _ _ _ _ | C - CENTER POINT CODE _ _ _ _ _ |
|-------------------|-------------------------|---|----------------------------|------------------------------------|

PRICING FORMULA

| | | | | | | |
|-----------------------|---|----------------|---|-----------------|---|------------------|
| A - MOUNT PRICE | + | B - PINS PRICE | + | C - POINT PRICE | = | TOTAL LIST PRICE |
| (Unit price times 10) | | | | | | |

For further assistance please call 1-800-338-0027, or complete the Information Request Sheet located on page 30 and fax to 1-800-338-0717