



Standard Length and Long Series Dead Centers

- Accuracy guaranteed to $\pm .00005$
- Through-hardened to 61-63 Rc for extra regrinds
- Carbide tipped dead centers are hardened only on the knockout ends.
- Riten full service and repair
- Applying a Moly EP632 grease on the point will reduce friction and wear.



Std. Length Style 1, Steel

Std. Length Style 2, Steel

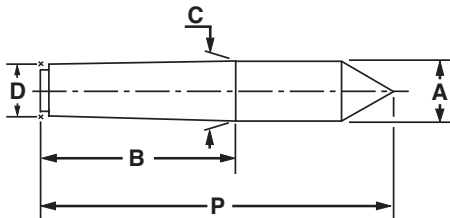
Std. Length Style 3, Carbide

Std. Length Style 4, Carbide

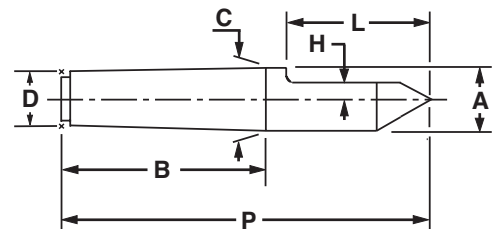


Long Series. Carbide Tipped Points available. See Fast-Trak Specials, page 22.

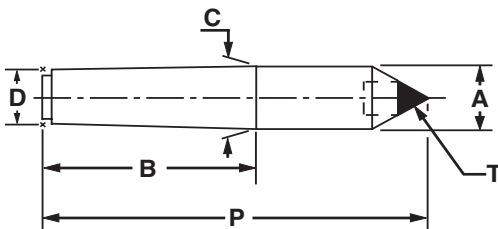
STEEL FULL CENTER - STYLE 1



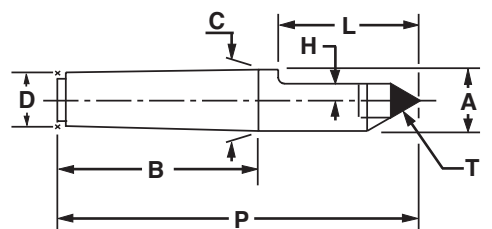
STEEL HALF CENTER - STYLE 2



CARBIDE TIPPED FULL CENTER - STYLE 3



CARBIDE TIPPED HALF CENTER - STYLE 4



When ordering, specify 4-digit model # from page 20 and add style #.

Examples:

4 Morse Taper, Steel Full Center, = 71041 

12 Jarno Taper, Carbide Tipped Half Center = 72124 