



Fast-Trak Specials

Order a Fast-Trak Special when you need a special center and time is of the essence. Additional tapers are available from our semi-finished inventories. Call Riten at **800-338-0027** with your special requirements. If you would rather fax your requirements, see pages 35 and 36.

- Accuracy guaranteed to $\pm .00005$
- Popular sizes in stock for fast delivery
- Other tapers available
- Hardened knockout ends
- Riten full service and repair

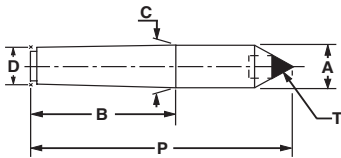


Special Carbide Full & Half Dead Centers

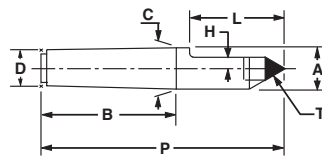
When ordering, specify 4-digit model # and add style #.

Example: 3 Morse Taper, Full Center = 79053

STYLE 3 - FULL CENTER



STYLE 4 - HALF CENTER



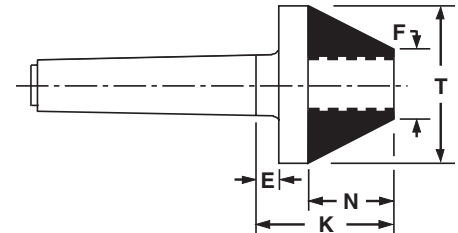
MORSE TAPER

Model	Taper	P	B	C/A	D	•T	H	L
7905	3MT	5.25	3.19	0.938	0.778	0.75	0.13	1.69
7906	3MT	6.25	3.19	0.938	0.778	0.75	0.13	2.63
7907	3MT	6.75	3.19	0.938	0.778	0.75	0.13	3.13
7908	4MT	6.75	4.06	1.231	1.020	0.75	0.13	2.25
7909	4MT	6.75	4.06	1.231	1.020	1.00	0.13	2.25
7910	4MT	7.75	4.06	1.231	1.020	0.75	0.13	2.75
7911	4MT	7.75	4.06	1.231	1.020	1.00	0.13	2.75
7912	4MT	8.25	4.06	1.231	1.020	0.75	0.13	3.25
7913	4MT	8.25	4.06	1.231	1.020	1.00	0.13	3.25
7914	5MT	8.50	5.19	1.748	1.475	1.00	0.13	2.75
7915	5MT	9.50	5.19	1.748	1.475	1.00	0.13	3.75
7916	5MT	10.00	5.19	1.748	1.475	1.00	0.13	4.25

JARNO TAPER

7926	10J	7.50	5.00	1.250	1.000	1.00	0.13	2.00
7927	10J	8.50	5.00	1.250	1.000	1.00	0.13	3.00
7928	10J	9.25	5.00	1.250	1.000	1.00	0.13	3.75
7929	14J	10.50	7.00	1.750	1.400	1.00	0.13	3.00
7930	14J	11.50	7.00	1.750	1.400	1.00	0.13	4.00
7931	14J	12.00	7.00	1.750	1.400	1.00	0.13	4.50

Special Carbide Bull Nose Dead Centers



MORSE TAPER

Model	MT	•T	F	N	E	K
66901	3	1.75	0.75	0.86	0.50	1.86
66902	3	2.00	0.75	1.08	0.50	2.08
66903	3	2.50	1.00	1.29	0.50	2.30
66904	3	2.75	1.00	1.51	0.50	2.51
66905	4	1.75	0.75	0.86	0.50	1.86
66906	4	2.00	0.75	1.08	0.50	2.08
66907	4	2.50	1.00	1.29	0.50	2.30
66908	4	2.75	1.00	1.51	0.50	2.51
66909	5	1.75	0.75	0.86	0.50	2.64
66910	5	2.00	0.75	1.08	0.50	2.08
66911	5	2.50	1.00	1.29	0.50	2.30
66912	5	2.75	1.00	1.51	0.50	2.51

• Carbide diameter