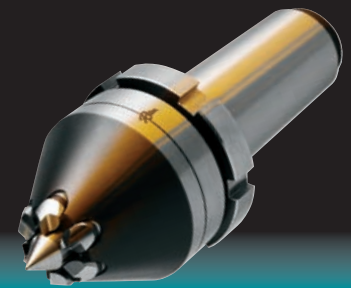




Mechanical Face Drivers

TYPE 45

Driving Diameter Range: 1.34" - 1.73"



Selecting the Face Driver components:

- #1 Determine the Face Driver model with the type of mounting required for the machine.
 - #2 If mounting directly to machine spindle, verify spindle size and select appropriate spindle adapter.
 - #3 Choose the center point with the diameter range closest to the center hole diameter.
 - #4 Determine machine spindle rotation and driving diameter to select the correct drive pins.
- Rotation is determined by looking directly at the spindle face or chuck face.
(For detailed instructions on selecting a face driver, see page 45).

Mounting Styles Available for Type 45



Morse Taper*



Flange Mount*

* All mechanical styles can be chucked.

TO ORDER: A complete unit consists of a face driver, center point and drive pins. For direct mounts, a spindle adapter must be added.

#1 Face Driver
order code: _____

#2 Spindle Adapter
order code: _____
(only required for direct mount)

#3 Center Point
order code: _____

#4 Drive Pins
order code: _____
(6 pins required)

#1 FACE DRIVER

Order Code	Mounting Style
4504	#4 Morse Taper
4505	#5 Morse Taper
45FM	Flange Mount
456150	1.5 Straight Shank

#2 SPINDLE ADAPTER (For direct mount only)

Order Code	Spindle Size
708037	A2-5
708038	A2-6
708039	A2-8
708040	A2-11

#3 CENTER POINT

Order Code	Center Hole Dia. Range
C4501 C4502	0.08 - 0.710 0.669 - 0.866
C4503	0.828 - 1.024
C4504	0.984 - 1.181
C4505	1.142 - 1.339
C4506	1.299 - 1.496

#4 DRIVE PINS (6 pins required)

Order Code	Counterclockwise (Right)		Clockwise (Left)	
	Outer Driving Diameter	Inner Driving Diameter	Outer Driving Diameter	Inner Driving Diameter
P4501	1.34	0.95	—	—
P4502	—	—	1.34	0.95
P4503	1.54	0.95	—	—
P4504	—	—	1.54	0.95
P4505	1.73	0.95	—	—
P4506	—	—	1.73	0.95
P4531	1.34	1.07	—	—
P4532	—	—	1.34	1.07
P4533	1.54	1.07	—	—
P4534	—	—	1.54	1.07
P4535	1.73	1.07	—	—
P4536	—	—	1.73	1.07
P4541	1.34	1.22	—	—
P4542	—	—	1.34	1.22
P4543	1.54	1.22	—	—
P4544	—	—	1.54	1.22
P4545	1.73	1.22	—	—
P4546	—	—	1.73	1.22
P4553	1.54	1.38	—	—
P4554	—	—	1.54	1.38
P4555	1.73	1.38	—	—
P4556	—	—	1.73	1.38
P4565	1.73	1.54	—	—
P4566	—	—	1.73	1.54