



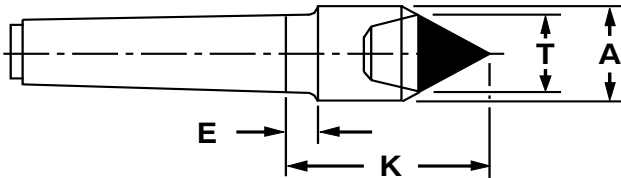
Imperial Dead Centers

Large Carbide Point

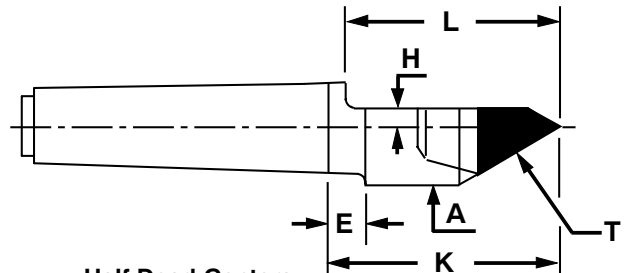
Increased Center Hole Range

- Accuracy guaranteed to $\pm .00005$.
- Covers the widest range of center hole sizes.
- Eliminates the need for special centers.
- Also available in other tapers.

Imperial Carbide Centers cover the requirements for a wide range of workpiece center holes. They reduce costs by eliminating the need for special dead centers. Knockout ends are hardened on carbide tipped dead centers. Applying a Moly EP632 grease on the point will reduce friction and wear.



Full Dead Centers



Half Dead Centers

MORSE TAPER					
Taper	T*	A	K	E	Model
2	1.00	1.25	2.38	0.38	69102
3	1.00	1.25	2.37	0.38	69103
4	1.25	1.75	2.69	0.50	69104
5	1.25	1.75	3.31	—	69105

JARNO TAPER					
Taper	T*	A	K	E	Model
6	1.00	1.25	2.38	0.38	69206
9	1.25	1.75	2.69	0.50	69209
10	1.25	1.75	2.69	0.50	69210
14	1.25	1.75	3.50	—	69214

BROWN & SHARPE TAPER					
Taper	T*	A	K	E	Model
7	1.00	1.25	2.37	0.38	69407
9	1.25	1.75	2.69	0.50	69409
12	1.25	1.80	4.00	—	69412

* Carbide Diameter

MORSE TAPER							
Taper	T*	A	H	L	K	E	Model
2	1.00	1.25	0.13	1.69	2.38	0.38	69502
3	1.00	1.25	0.13	1.69	2.37	0.38	69503
4	1.25	1.75	0.25	2.25	2.94	0.50	69504
5	1.25	1.75	0.25	2.75	3.31	—	69505

JARNO TAPER							
Taper	T*	A	H	L	K	E	Model
6	1.00	1.25	0.13	1.88	2.38	0.38	69606
9	1.25	1.75	0.25	1.88	2.94	0.50	69609
10	1.25	1.75	0.25	2.00	2.94	0.50	69610
14	1.25	1.75	0.25	3.00	3.50	—	69614

BROWN & SHARPE TAPER							
Taper	T*	A	H	L	K	E	Model
7	1.00	1.25	0.13	1.87	2.37	0.38	69707
9	1.25	1.75	0.25	2.00	2.94	0.50	69709
12	1.25	1.80	0.25	3.25	4.00	—	69712

* Carbide Diameter