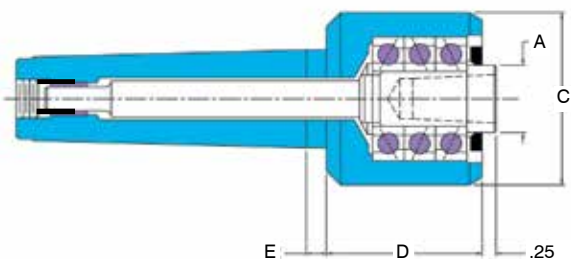


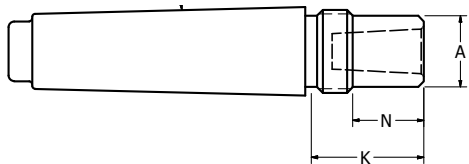


Quick Point Live Centers, Dead Centers and Sets

- Accuracy guaranteed to $\pm .00025$.
- Interchangeable points reduce the need for several centers.
- Purchase individual replacement points or a complete set.
- Special points are available upon request.
- Mounting taper of points is 1:10.
- Safe storage container provided with a complete set.
- Point extractor for easy removal of points is included in the set or can be purchased separately.
- Optional C4T labyrinth bearing seal ([see page 4](#))



A Quick Point Set includes: one live center, one male point, one female point, one tracer point, one bull nose point, and one point extractor.



A Quick Point Set includes: one dead center, one tracer point, one bull nose point, one carbide tip point, one male point, one half point, and one point extractor.

LIVE CENTER*							
Model	MT	A	C	D	E	Max. RP	W. P. Weight
49102	2	0.98	2.13	2.00	0.38	5000	100
49103	3	0.98	2.13	2.00	0.37	5000	350
49104	4	1.38	3.07	2.78	0.36	5000	550
49105	5	1.57	3.07	2.78	0.36	5000	1400

*Live Center includes male point unless otherwise specified.

CNC DEAD CENTER							
Model	MT	A	N	K	Threads	Nut	
68323	3	0.75	0.75	1.19	7/8 - 14	81031	
68324	4	1.00	0.75	1.44	11/8 - 12	81041	
68325	5	1.25	0.74	1.62	15/8 - 12	81051	
68384*	4	1.25	0.75	1.94	13/8 - 12	86041	
68385*	5	1.75	0.75	2.24	17/8 - 12	86051	

* Special taper for Mazak machines
Note: Dead center does not include a point.

LIVE CENTER SETS

Model	Taper
49502	2
49503	3
49504	4
49505	5

DEAD CENTER SETS

Model	Taper	Mazak
68303	3	-
68304	4	68394
68305	5	68395

POINT EXTRACTORS

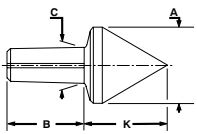
Model	Taper
49904	2, 3, 4
49905	5



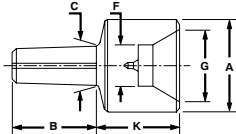


Quick Point Replacement Points

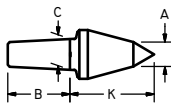
- Accuracy guaranteed to $\pm .0002$.
- Interchangeable points reduce the need for several centers.
- Purchase individual replacement points or a complete set.
- Special points are available upon request.
- Mounting taper of points is 1:10.
- Safe storage container provided with a complete set.
- Point extractor for easy removal of points is included in the set or can be purchased separately.



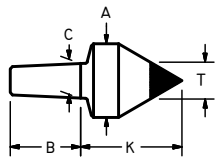
M - Male Point



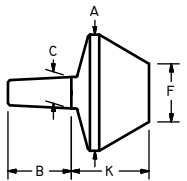
F - Female Point



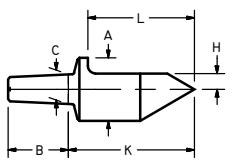
T - Tracer Point



CT - Carbide Tip Male Point



BN - Bull Nose Point



HP - Half Point

QUICK POINTS

Model	MT	Style	A	F	G	K	C	B	T	H	L
91031	2/3	M	1.00	-	-	1.17	0.47	0.96	-	-	-
91032	2/3	F	1.13	0.50	0.88	1.07	0.47	0.96	-	-	-
91033	2/3	T	0.38	-	-	1.30	0.47	0.96	-	-	-
91034	2/3	BN	1.75	0.88	-	1.17	0.47	0.96	-	-	-
91035	2/3	CT	1.00	-	-	1.38	0.47	0.96	0.50	-	-
91036	2/3	HP	1.00	-	-	2.00	0.47	0.96	-	0.25	1.69
91041	4	M	1.13	-	-	1.30	0.59	1.20	-	-	-
91042	4	F	1.38	0.63	1.13	1.21	0.59	1.20	-	-	-
91043	4	T	0.50	-	-	1.80	0.59	1.20	-	-	-
91044	4	BN	2.25	1.00	-	1.55	0.59	1.20	-	-	-
91045	4	CT	1.00	-	-	1.38	0.59	1.20	0.50	-	-
91046	4	HP	1.13	-	-	2.55	0.59	1.20	-	0.25	2.25
91051	5	M	1.50	-	-	1.65	0.87	1.44	-	-	-
91052	5	F	1.50	0.75	1.25	1.21	0.87	1.44	-	-	-
91053	5	T	0.50	-	-	2.12	0.87	1.44	-	-	-
91054	5	BN	2.75	1.50	-	1.58	0.87	1.44	-	-	-
91055	5	CT	1.25	-	-	1.69	0.87	1.44	0.63	-	-
91056	5	HP	1.50	-	-	3.06	0.87	1.44	-	0.38	2.75