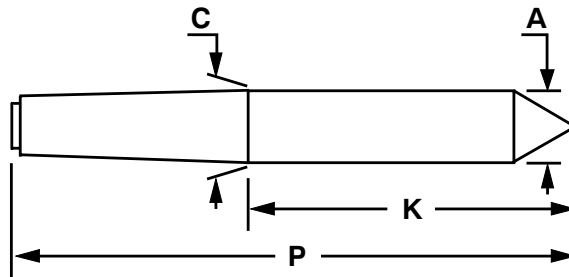
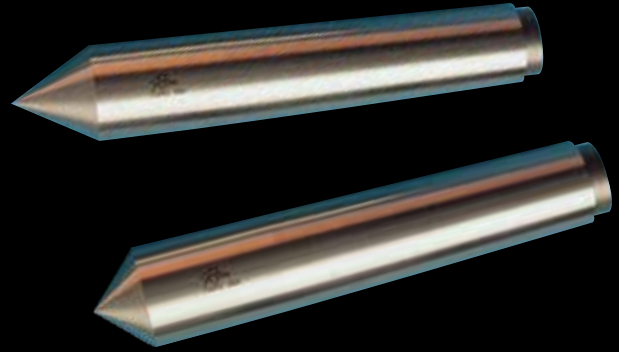




60° & 90° Dead Centers, Standard & Long Lengths

- Accuracy guaranteed to $\pm .00005$
- Through-hardened to 61-63 Rc for extra regrinds
- Applying a Moly EP632 grease on the point will reduce friction and wear.
- Riten full service and repair



MORSE TAPER				MODEL	
TAPER	P	K	C/A	60°	90°
2	5.19	2.63	0.700	64502	97502
2	6.78	4.22	0.700	64602	97602
3	5.25	2.06	0.938	71031	97031
3	6.25	3.06	0.938	64503	97503
3	6.75	3.56	0.938	64603	97603
4	6.75	2.69	1.231	71041	97041
4	7.75	3.69	1.231	64504	97504
4	8.25	4.19	1.231	64604	97604
5	8.50	3.31	1.748	71051	97051
5	9.53	4.35	1.748	64505	97505
5	10.00	4.81	1.748	64605	97605
6	11.50	4.25	2.494	71061	97061
6	12.50	5.25	2.494	64506	97506
6	13.00	5.75	2.494	64606	97606
7	15.00	5.00	3.270	71071	97071
7	16.00	6.00	3.270	64507	97507

METRIC TAPER (1:20)				MODEL	
TAPER	P	K	C/A	60°	90°
80	12.50	4.78	3.150	70080	97080
100	14.50	5.37	3.937	70100	97100

BROWN & SHARPE TAPER				MODEL	
TAPER	P	K	C/A	60°	90°
7	5.25	2.37	0.720	64407	97407
12	12.25	5.12	1.797	64412	97412

JARNO TAPER				MODEL	
TAPER	P	K	C/A	60°	90°
10	7.50	2.50	1.250	72101	97101
10	8.50	3.50	1.250	64510	97510
10	9.25	4.25	1.250	64610	97610
14	10.50	3.50	1.750	72141	97141
14	11.50	4.50	1.750	64514	64514
14	12.00	5.00	1.750	64614	64914