



Fast-Trak Specials

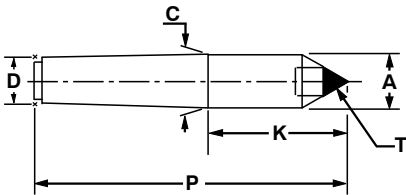
Carbide Full & Half Dead Centers

Additional tapers are available from our semi-finished inventories. To call, fax or email Riten with your special requirements see pages 41 and 42.

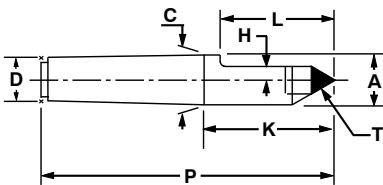
- Accuracy guaranteed to $\pm .00005$
- Popular sizes in stock for fast delivery
- Other tapers available
- Hardened knockout ends
- Riten full service and repair



FULL CENTER



HALF CENTER



MORSE TAPER DEAD CENTERS

| Taper | P | K | C/A | D | •T | H | L |
|-------|-------|------|-------|-------|------|------|------|
| 3 | 5.25 | 2.06 | 0.938 | 0.778 | 0.75 | 0.13 | 1.69 |
| 3 | 6.25 | 3.06 | 0.938 | 0.778 | 0.75 | 0.13 | 2.63 |
| 3 | 6.75 | 3.56 | 0.938 | 0.778 | 0.75 | 0.13 | 3.13 |
| 4 | 6.75 | 2.69 | 1.231 | 1.020 | 0.75 | 0.13 | 2.25 |
| 4 | 6.75 | 2.69 | 1.231 | 1.020 | 1.00 | 0.13 | 2.25 |
| 4 | 7.75 | 3.69 | 1.231 | 1.020 | 0.75 | 0.13 | 2.75 |
| 4 | 7.75 | 3.69 | 1.231 | 1.020 | 1.00 | 0.13 | 2.75 |
| 4 | 8.25 | 4.19 | 1.231 | 1.020 | 0.75 | 0.13 | 3.25 |
| 4 | 8.25 | 4.19 | 1.231 | 1.020 | 1.00 | 0.13 | 3.25 |
| 5 | 8.50 | 3.31 | 1.748 | 1.475 | 1.00 | 0.13 | 2.75 |
| 5 | 9.50 | 4.31 | 1.748 | 1.475 | 1.00 | 0.13 | 3.75 |
| 5 | 10.00 | 4.81 | 1.748 | 1.475 | 1.00 | 0.13 | 4.25 |

MODEL

| FULL | HALF |
|-------|-------|
| 79053 | 79054 |
| 79063 | 79064 |
| 79073 | 79074 |
| 79083 | 79084 |
| 79093 | 79094 |
| 79103 | 79104 |
| 79113 | 79114 |
| 79123 | 79124 |
| 79133 | 79134 |
| 79143 | 79144 |
| 79153 | 79154 |
| 79163 | 79164 |

JARNO TAPER DEAD CENTERS

| Taper | P | K | C/A | D | •T | H | L |
|-------|-------|------|-------|-------|------|------|------|
| 10 | 7.50 | 2.50 | 1.250 | 1.000 | 1.00 | 0.13 | 2.00 |
| 10 | 8.50 | 3.50 | 1.250 | 1.000 | 1.00 | 0.13 | 3.00 |
| 10 | 9.25 | 4.25 | 1.250 | 1.000 | 1.00 | 0.13 | 3.75 |
| 14 | 10.50 | 3.50 | 1.750 | 1.400 | 1.00 | 0.13 | 3.00 |
| 14 | 11.50 | 4.50 | 1.750 | 1.400 | 1.00 | 0.13 | 4.00 |
| 14 | 12.00 | 5.00 | 1.750 | 1.400 | 1.00 | 0.13 | 4.50 |

MODEL

| FULL | HALF |
|-------|-------|
| 79263 | 79264 |
| 79273 | 79274 |
| 79283 | 79284 |
| 79293 | 79294 |
| 79303 | 79304 |
| 79313 | 79314 |